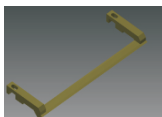


选配件 Options

■ 过渡板 Transition plate



使产品在称量部和输送部之间平稳过渡，适用于QCW120/160机型。

Smooth transition between the weighing section and the conveying section, applies to QCW120/160 models.

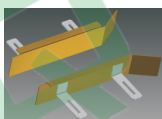
加装原则是，能不加装就不加装，因为过渡板会妨碍物品的运动。

建议：当产品直径小于滚筒直径两倍时，加装过渡板；当产品直径大于滚筒直径两倍时，不加装过渡板。

The principle of installing is that, don't install if not necessary for the transition board will hamper the movement of the objects.

Advice: When the diameter of the product is two times the diameter of the roller, it is necessary to install the transition plate. When the diameter of the product is more than two times the diameter of the roller, it is recommended not to install the transition plate.

■ 产品导流板 Product deflector



使被测品规则流动。

Make the product to be tested flow regularly.

■ 防风罩 Windshield



减少来自侧面、上方风的影响。

Reduce the influence of wind from the side and above.

■ 剔除器罩 Rejector cover



避免剔除机构动作时造成人身伤害。

Avoid personal injuries due to the movement of the rejecting mechanism.

■ 剔除箱 Rejector box



存储不合格品，可加装剔除箱满报警开关。

For storing unqualified products, an alarm switch can be installed for alarming when the removing box is full.

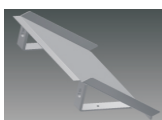
■ 剔除确认 Rejector confirmation



加装光栅，确保不合格品100%剔除。

Install light curtain to ensure that the all unqualified products can be rejected.

■ 剔除溜板 Rejector slide plate



导流不合格品，与客户生产线对接。

Divert the unqualified products, and joint the customer's production line.

■ 不合格品暂存架 Substandard goods storage rack



暂存不合格品，可加装暂存架满报警开关。

For storing unqualified products unqualified products temporarily, an alarm switch can be installed for alarming when the temporarily-storing shelf full.

选配件 Options

■ 报警灯 (带蜂鸣器) Warning lights (with buzzer)



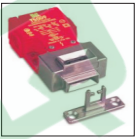
可远距离监控运转状态。
You can remotely monitor the operating condition.

■ 紧急停止开关 Emergency stop switch



万一发生紧急状况时, 停止设备运转。
In case of an emergency situation, stop the equipment operation.

■ 安全开关 Safety switch



防风罩、剔除器罩等加装安全开关。
A safety switch, such as wind shield, cover, etc..

■ 打印机/条码机/标签机/喷码机 Printer/Barcode/Label machine/Maji



打印内容按客户需求订制。
Print customized according to customer demand.

■ 外部开关量 External IO switch



- 前端缺料、后端堵料报警。
- 检重机启停开关输出或接受远程启停。
- Alarm for the front end lacking materials and materials jamming at the back end.
- Output the start-up/stop switch of the checkweigher or conduct remote start-up/stop.

■ 远程通讯 Remote communication



- 自由协议通讯: RS232或RS485接口。
- MODBUS RTU/TCP通讯: RS232/RS485或RJ45以太网接口。
- 远程人机: RS232/RS485接口或RJ45以太网接口。
- Free communication protocol: RS232 or RS485 interface.
- MODBUS RTU/TCP communication: RS232 or RS485 or RJ45 interface.
- Remote HMI: RS232 or RS485 or RJ45 interface.

■ 双机联网 Double machine connected



前一台检重机检产品初始重量, 后一台检重机检加料后或放置配件后的重量, 检测加料净重是否合格或是否放置配件。

The previous checkweigher tests the initial weight of the products and the next checkweigher tests the weight after adding materials or accessories to test whether the net weight of the added materials is qualified or whether the accessories are placed.