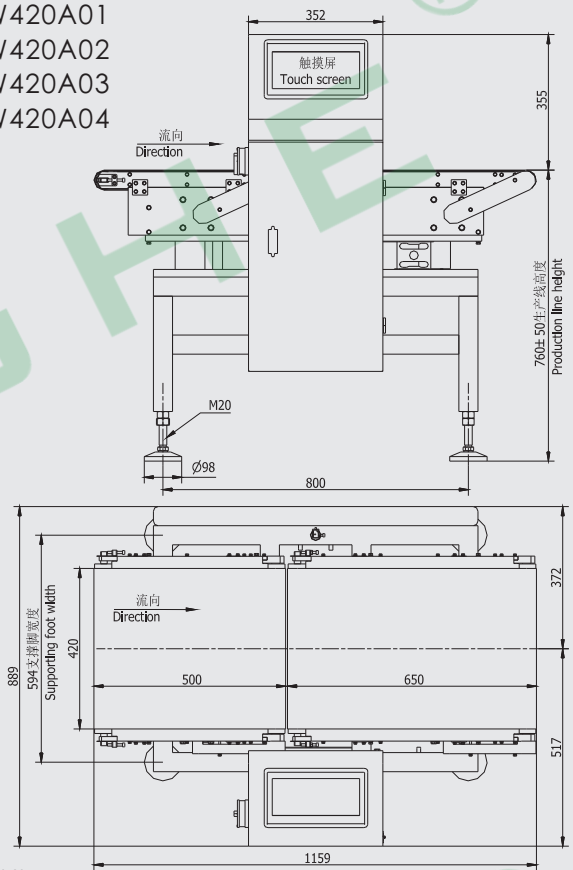


# QCW420



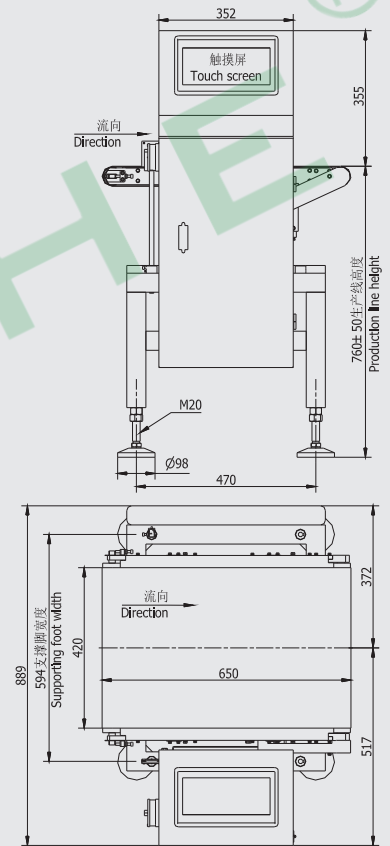
QCW420A01  
 QCW420A02  
 QCW420A03  
 QCW420A04



单位: mm



QCW420B01  
 QCW420B02  
 QCW420B03  
 QCW420B04

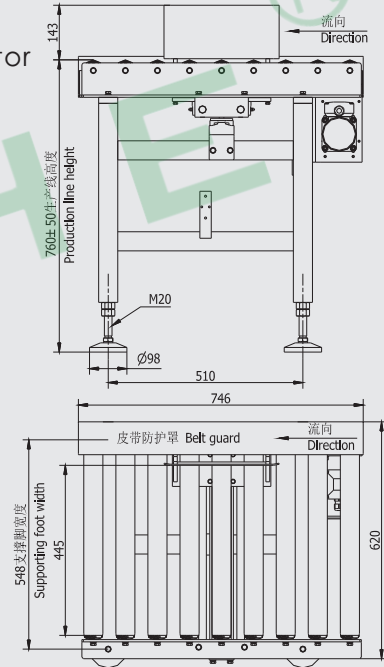


单位: mm

# QCW420



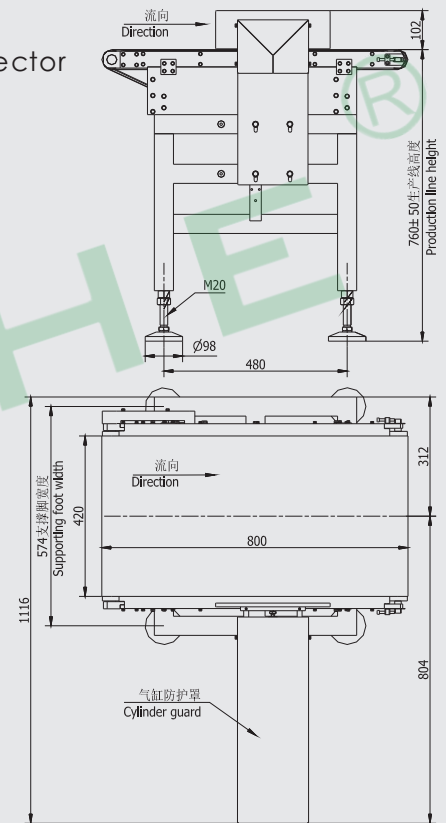
推选剔除  
Push type rejector



单位: mm



推选剔除  
Push type rejector



单位: mm

## 技术规格 Specifications

型号 Model	QCW420A01 QCW420B01	QCW420A02 QCW420B02	QCW420A03 QCW420B03	QCW420A04 QCW420B04
传感器量程 Loadcell Capacity	50kg	100kg	50kg	100kg
称重范围Capacity	20~6500g	40~15000g	20~6500g	40~15000g
显示分度Resolution	0.5g	1g	0.5g	1g
最高选别精度(3σ)* Accuracy(3σ)	±2g	±4g	±2g	±4g
最高选别能力* Thoughtput	41~96pcs/min		41~63pcs/min	
显示操作方式 Display	10#彩色触摸屏 10# color touch screen			
产品数量 Number of items	199种 199 items			
分选段数 Sorting section	2段 2 sections			
分选类别 Sorting type	推杆式 Push type rejector			
被测品 Product	长Length	110~500mm		
	宽Width	5~400mm		
	高Height	5~500mm		
输送段速度 Conveyor belt speed	23~75m/min		16~50m/min	
	调速方式: 变频器无级调速, 在触摸屏上操作 Speed control mode: Inverter stepless speed regulation, operation on touch screen			
一般技术规格 General specifications	<p>电源: 标配单相AC200~240V, 50/60Hz, 0.4kw, 可选三相AC380V,50/60Hz, 0.4kw                      气源: 干燥的0.5~0.7MPa(5~7bar)                      温度: 使用温度: 0℃~40℃, 储存温度: -20℃~60℃                      湿度: 10~90%RH, 无冷凝                      防护等级: IP30                      噪声: ≤75db                      机器重量: 约60kg                      工作高度: 760±50mm (其它高度订货时确定)                      Power supply: Standard Single phase AC200~240V, 50/60Hz, 0.4kw                      Optional three phase AC380V,50/60Hz, 0.4kw                      Air supply: Dry 0.5~0.7MPa(5~7bar)                      Temperature: Opretion temperature: 0℃~40℃, Storage temperature: -20℃~60℃                      Humidity: 10~90%RH, no condensation                      Protection level: IP30                      Noise: ≤75db                      Machine weight: Approx. 60kg                      Conveyor height: 760±50mm (Other height can be determined when ordering)</p>			
材质 Material	<p>称重传感器: 不锈钢                      电气柜: 不锈钢304                      滚筒: 不锈钢304                      输送机框架: 铝                      结构: 不锈钢304                      输送皮带: 绿色, 食品级, 聚氨脂热塑性塑料(TPU)                      Load cell: Stain steel                      Electrical cabinet: Stain steel 304                      Roller: Stain steel 304                      Conveyor frame: Aluminum                      Structure: stainless steel 304                      Conveyor belt: Green, food grade, thermoplastic polyurethane (TPU)</p>			

\*最高选别能力和精度, 根据实际被测品、选别部和安装环境的不同而有所不同。

\*Depends on the shape and rejector and the condition of the product and installation environment.